

141, Rush Green Road, Lymm WA13 9QN

Offers Over £600,000

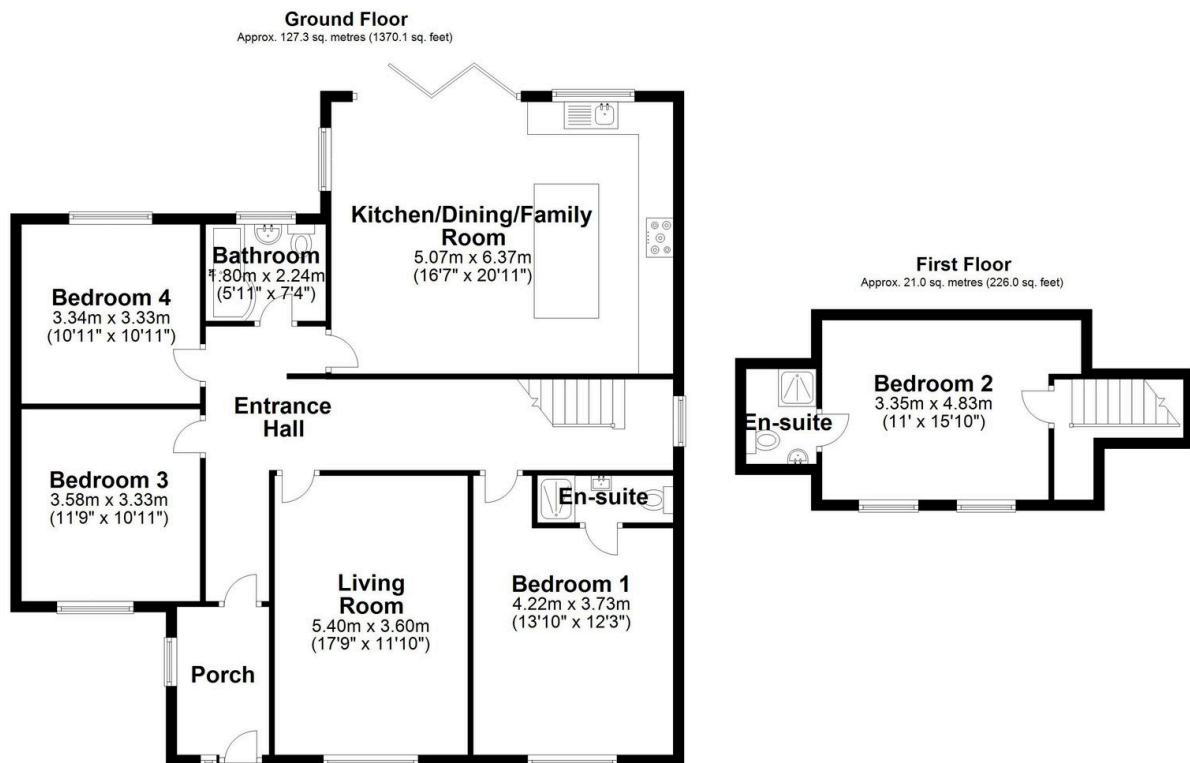
🛏 4 🚗 3 🚗 2



Extended detached property situated close to Lymm village centre and all of its amenities. Having been re-modelled by the current owners to provide spacious and versatile accommodation with a good sized driveway providing plentiful off-road parking and fully enclosed rear garden. Internal viewings are strongly recommended to appreciate all that this family home has to offer.

## Key Features

- Detached 4 bedroom family home
- Large open plan family dining kitchen
- Plentiful driveway parking
- Within walking distance of Lymm village centre and close to local amenities
- Reconfigured and refurbished throughout
- Two en-suites and family bathroom
- Quality fixtures and fittings throughout
- Easy commuting distance to major motorway networks



Total area: approx. 148.3 sq. metres (1596.1 sq. feet)

Measurements of rooms and any other items are approximate and no responsibility is taken for any misstatement. This plan is for illustrative purposes only and should be used as such. Produced by Openinsight.co.uk  
Plan produced using PlanUp.